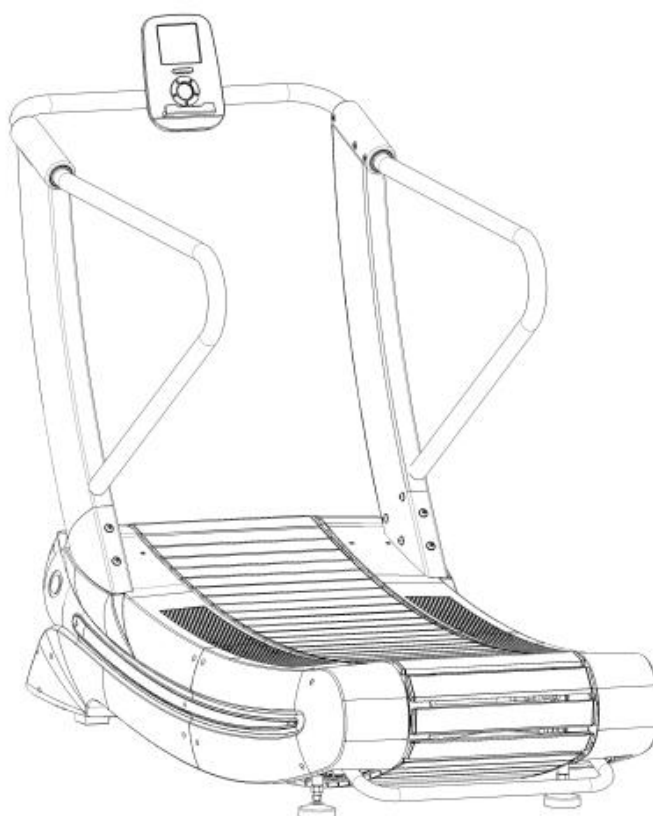




TZ-3000 Curve Treadmill Manual



Contents:

- 1. Safety Cautions**
- 2. Technical standard**
- 3. Machine diagram**
- 4. Installation procedures&Machine debug**
- 5. Operation guide**
- 6. Packing list**
- 7. Explosive view**

1. Safety Caution :

Please read all precautions and instructions in this manual before using this equipment.

1. This Curve treadmill is suitable for commercial fitness clubs, clubhouse fitness, bodybuilding training, sports training, physical education and so on.
2. This Curve treadmill is suitable for indoor use, do not use it outdoors or in high humidity situation. Do not splash water or any other liquid on the treadmill. Do not put or insert any abnormal things on the treadmill.
3. Please ensure its 4 feet on the ground when using it and placed it smoothly. There should retain 2000 mm * 1000 mm of safety space behind the treadmill.
4. When using the treadmill, please wear appropriate sportswear and sports shoes. For the exerciser who use the treadmill for the first time, professional guidance will be needed. In the event of an emergency, stop the machine immediately.
5. It is forbidden to let two or more people stand on the treadmill at the same time, the maximum load weight is 170 kg.
6. The heart rate sensor is not professional medical equipment, there are many reasons which can cause inaccurate detection, test results are for reference only.(Hold the heart of the handrail with both hands, several seconds later, to get a relatively accurate heart rate).
7. The action guidance:
 - A. Aerobic exercise : energy consumption, improve cardiopulmonary skills, accelerate the blood circulation, enhance physical fitness, loss weight.
 - B. When using this treadmill for the first time, exerciser needs to hold the handrail to keep the balance.
 - C. People can only walk down the treadmill after after safety confirmation.
8. Any part of treadmill can not be in loose status.
9. Never touch any parts of running treadmill with your finger.
10. People with long hair should pay attention to the safety of hair when using this treadmill.
11. When you feel uncomfortable when using this treadmill, please stop immediately and consult to the doctor.
12. Please check and make sure every bolt and screw was locked tight every time before you start to use the treadmill. If any of them is loose, please change or fixed it.
13. There must be the mark of "Stop" in maintenance.
14. If there is abnormal noise or other abnormal situation of the treadmill, please stop running immediately and contact our after-sales department immediately, or seek professional help.
15. This treadmill is coincident to the type of SC in EN 957-6.

2. Technical standard:

Input supply voltage: four-cell dry battery

Time: 0:00—99.59

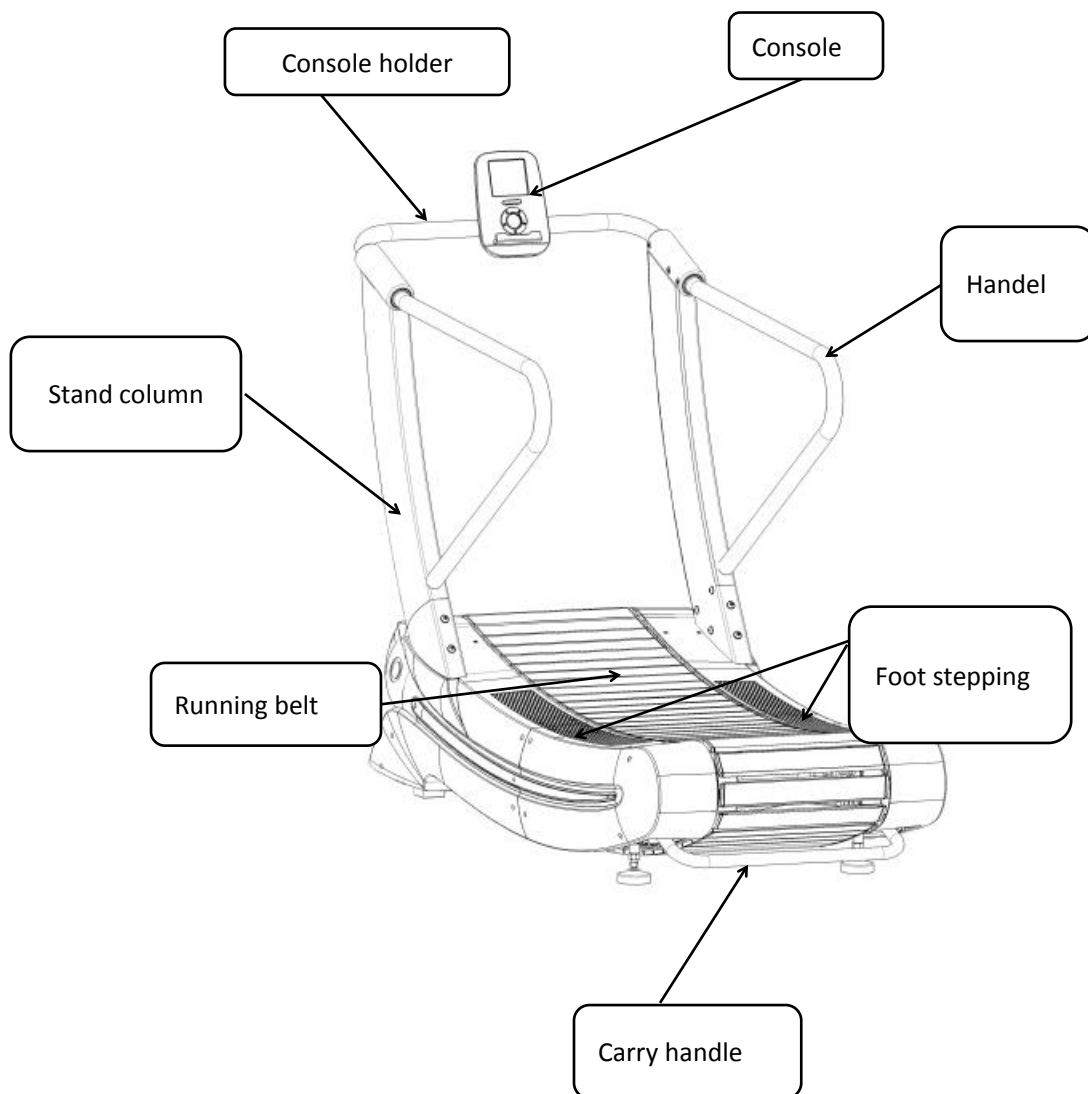
Distance: 0.00—99.99 (km)

Calories: 0—999 (kcal)

Heart rate: 60—300 (beats/min)

Revolving speed 0-900 (r/min)

3. Machine diagram



4. Installation procedures&Machine debug

Taking easy-assembly as the principle:

User Manual of this section is designed to ensure that the treadmills can be assembled correctly and easily.

- Considering the big size of the treadmill, please select the location where the treadmill will be placed and ensure there is enough space around it.

- Place all parts of the treadmill in the empty area and remove all packing materials. Do not discard the packing materials until the assembly work is completed.

- All bolts must be tightened during the assembly process unless otherwise stated, and all bolts must be tightened when the assembly work is completed.

- When assembling the treadmill, please make sure all parts are assembled according to the assembly drawing.

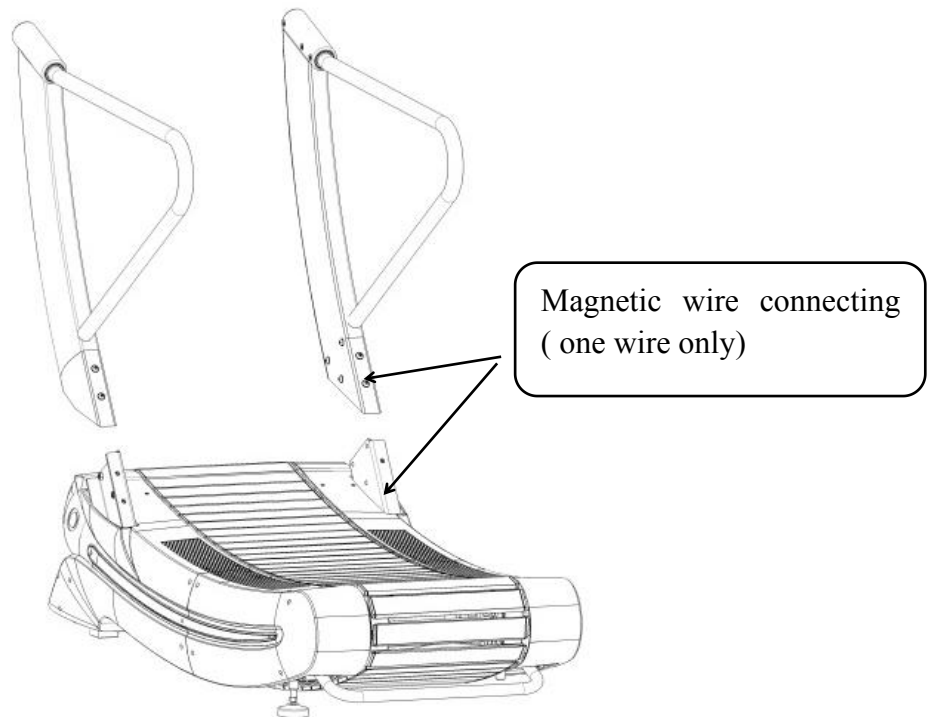
Assembly step one:

Connect the magnetic induction line and assemble the stand column.

Assembly instructions:

- 1) Remove the packing materials on both sides of the stand column.
- 2) Fix the stand column to the corresponding position of the main frame as shown in the picture below.

Note: Connect the magnetic line below.

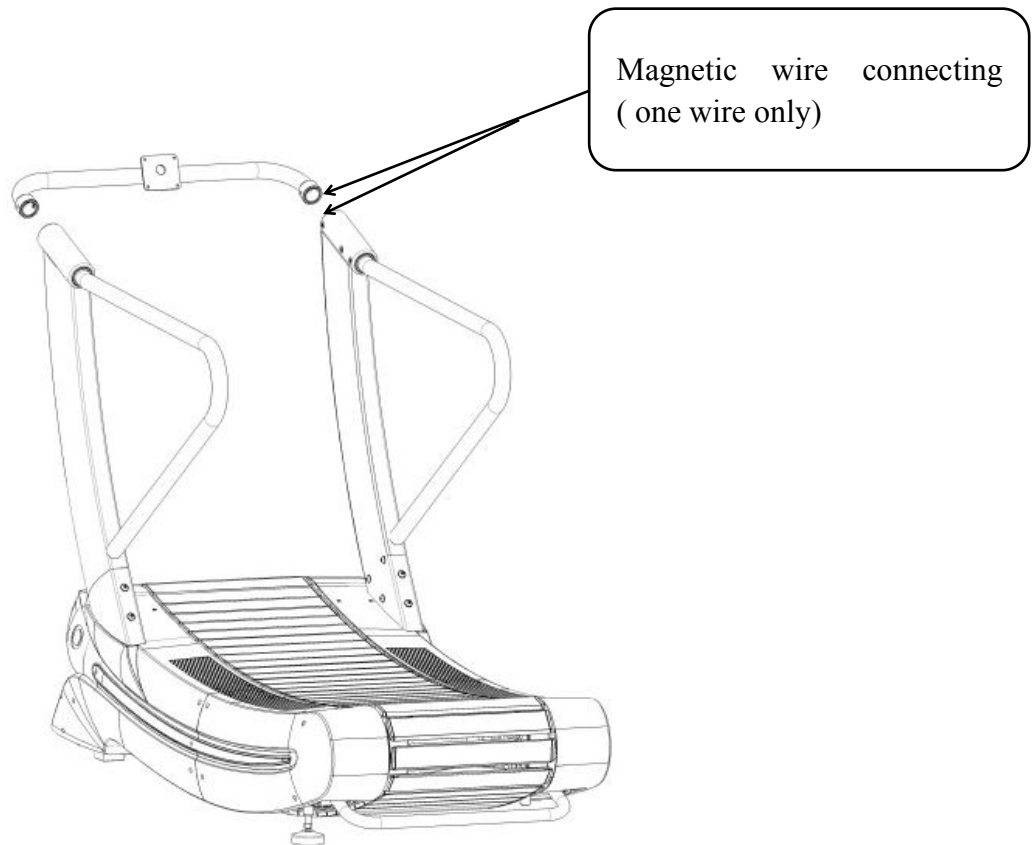


Assembly step two:

Connect the magnetic induction line and assemble the console holder:

Assembly instructions:

- 1) Connect the magnetic induction line of the console holder to those in the stand column.
- 2) Fix the console holder tightly with the stand column as shown in the picture below, using 2 pcs of (27).




Assembly step three:

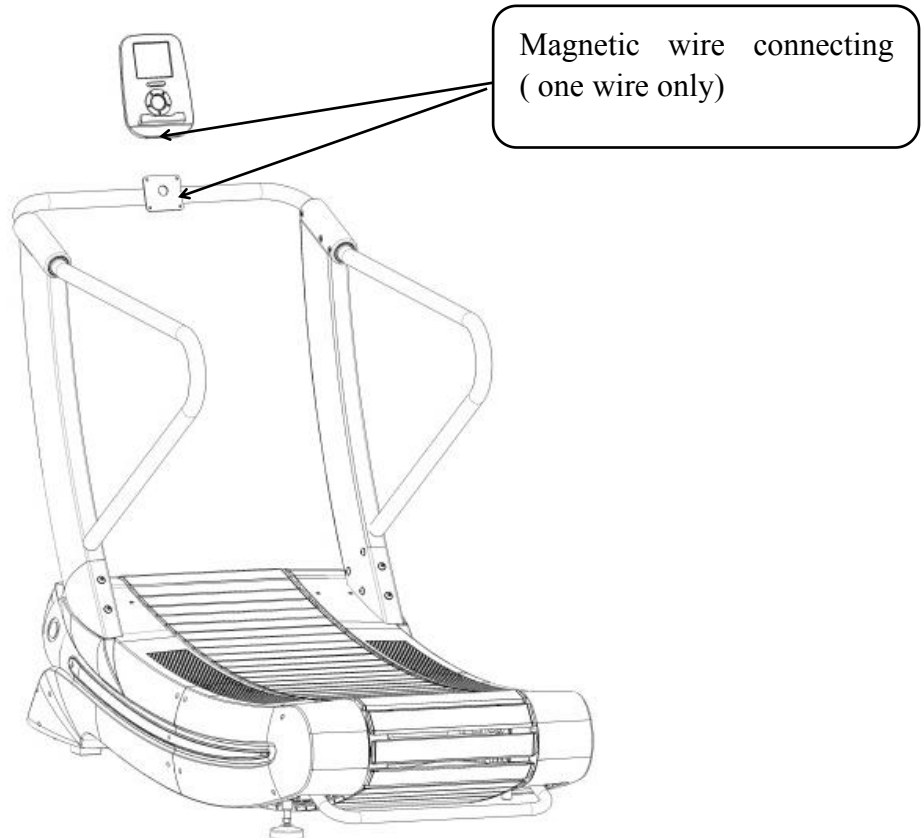
Assembling the console; connecting the magnetic line

1) Connecting the magnetic line of the console with the line in the holder console holder.

2) After connected the magnetic line, place the console at the joint of console holder and fasten it (as shown), using 4pcs of (13) and 4pcs of (14).

3) Stepping on the running belt run it, and press the button  to start the treadmill, check the machine is running normally or not, the console data display is comprehensive and accurate or not.

4) If the machine runs normally, all bolts are tightened in place, then, the treadmill is assembled;



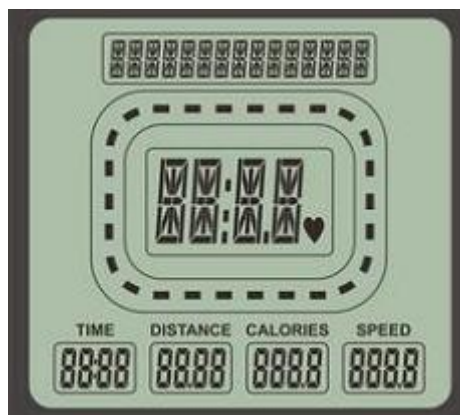
5. Operation guide

Console Introduction:

This treadmill adopts console model, four dry battery power supply, low power consumption, no external power supply required;

This treadmill interface has only one main interface, with six buttons to achieve the purpose of use, the specific operation methods of the treadmill are as follows:


1.Home page








The main interface is used to display device name, time, distance, calories, speed,

2. Six button



(1)  Start/Stop button. In standby mode, all data will start counting only when you click this button. Click this key while running, and all data will stop counting.

(2)  Numerical plus key: For numerical addition on numerical setting interface, growing rate: +1

- (3)  Numerical minus key: For numerical reduction on numerical setting interface, reduction rate: -1
- (4)  Program setting key: Click this key to start program setting, consist of body fat test; time reciprocal, distance reciprocal, calories reciprocal and heart rate monitoring five kinds of procedures;
- (5)  Reset key: Touch this button (no more than 3s) to back step.; Long press this key (more than or equal to 3s) to return to the initial interface, all data will be reset.
- (6)  Confirm key: Confirm key for data and program selection. numerical modification confirmation;

6. Packing list

Main Frame 1pcs.

Right side stand column handrail 1pcs

Left side stand column handrail 1pcs

Console welding assembly 1pcs

Console 1pcs

Φ10XΦ5.5X1.0t-C1 Washer 4pcs.

M5X12L-A1 Cross plate circular bolt 4pcs

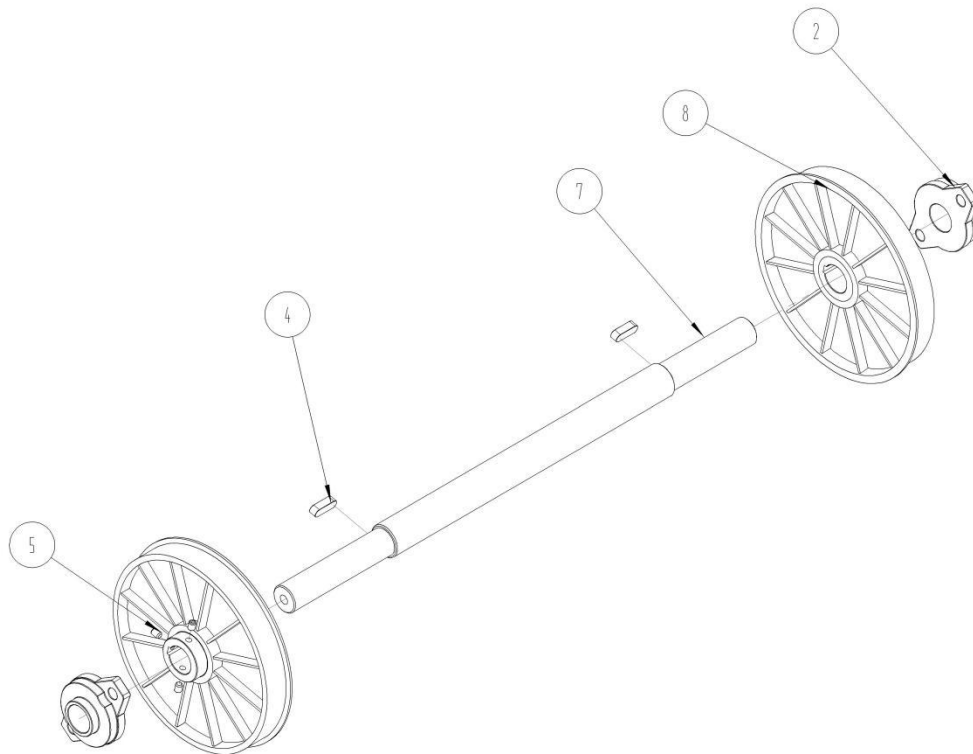
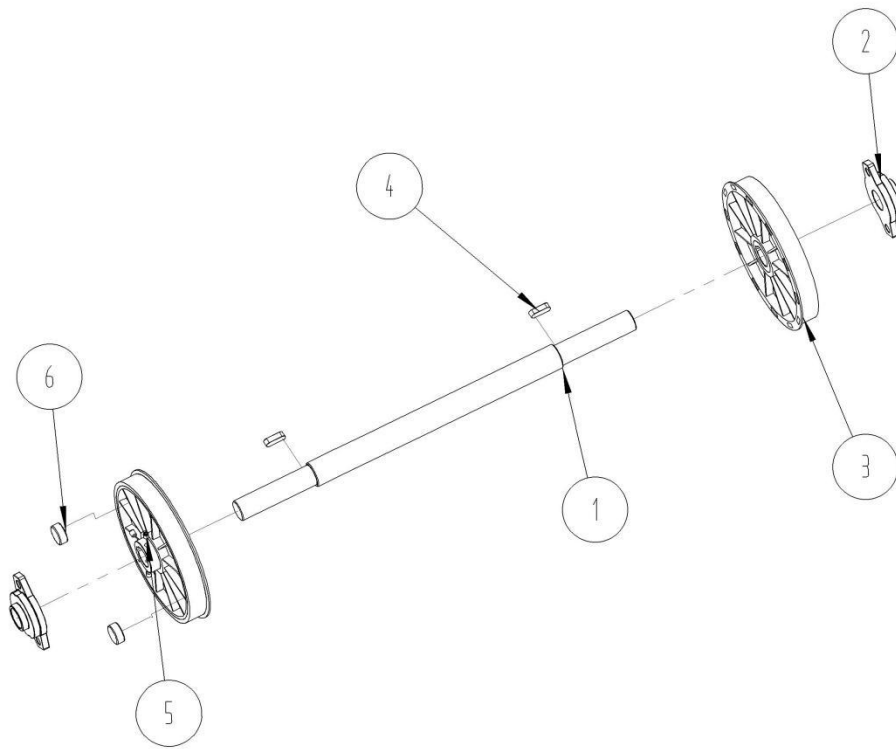
Φ20XΦ11X1.0t-C1 Washer 10pcs.

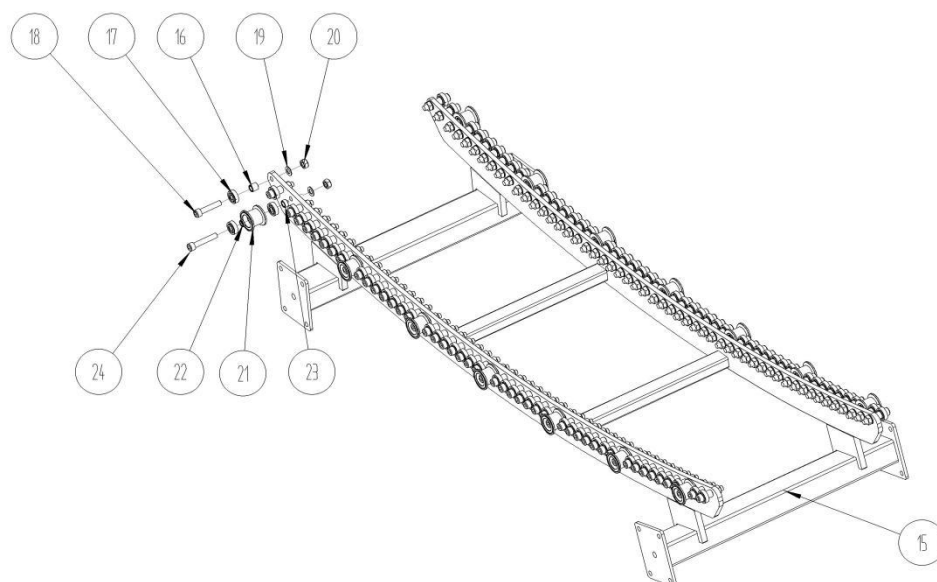
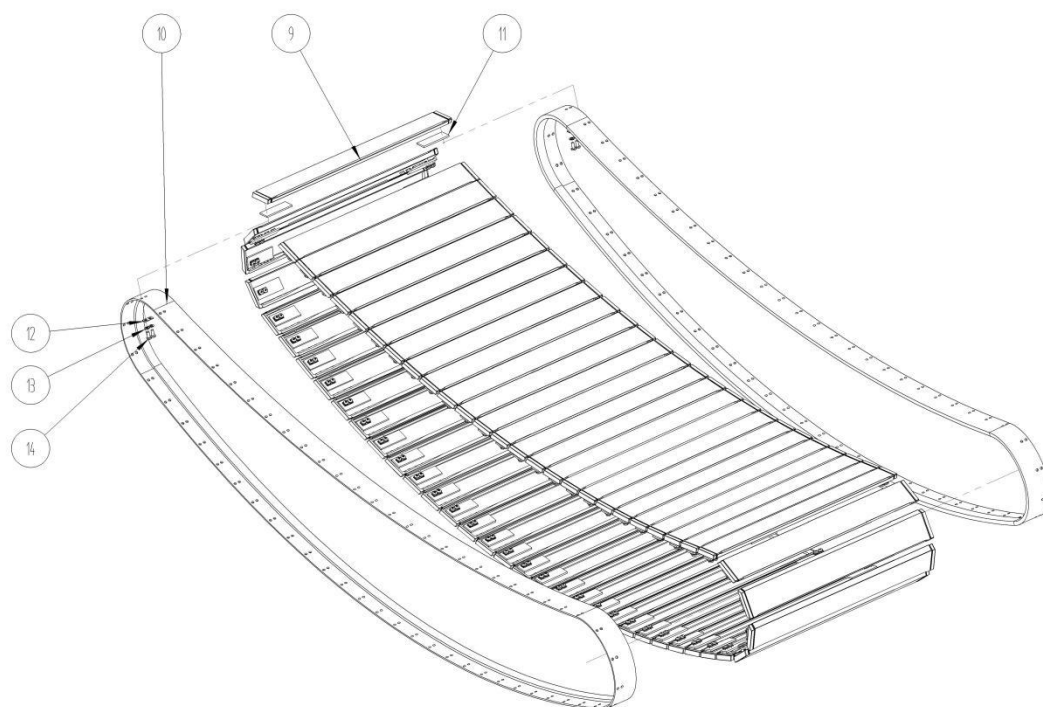
M10X20L-N2 Hexagon socket button screws 10pcs

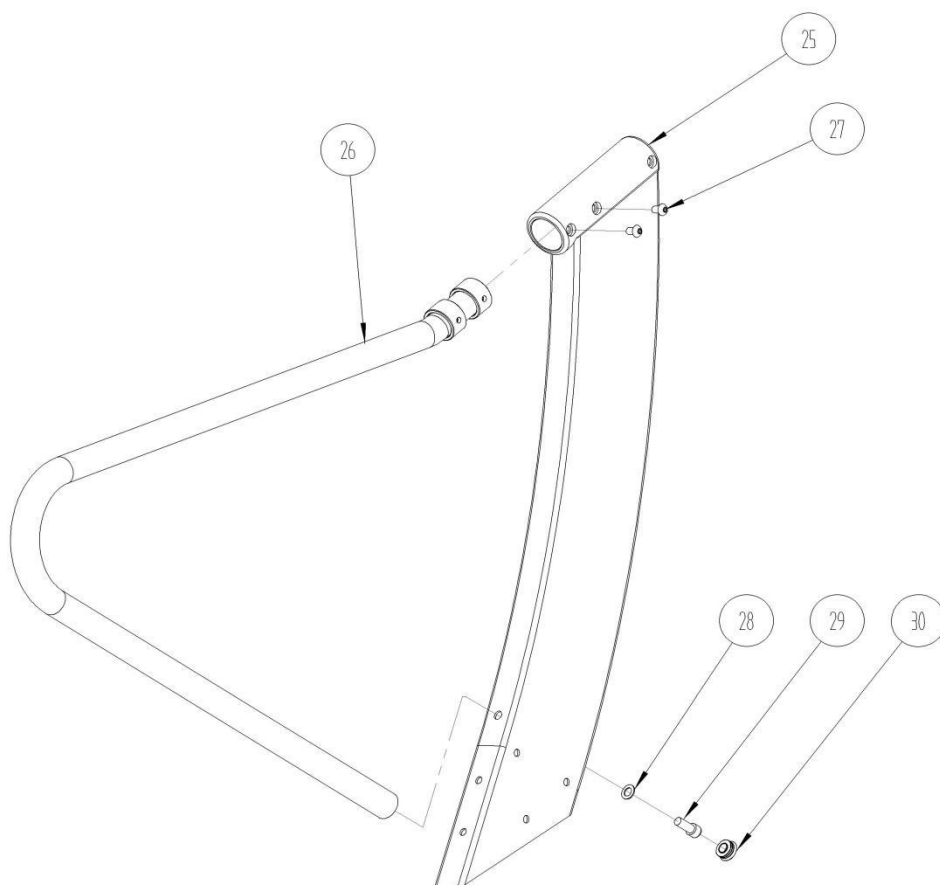
Screwdriver 1pcs.

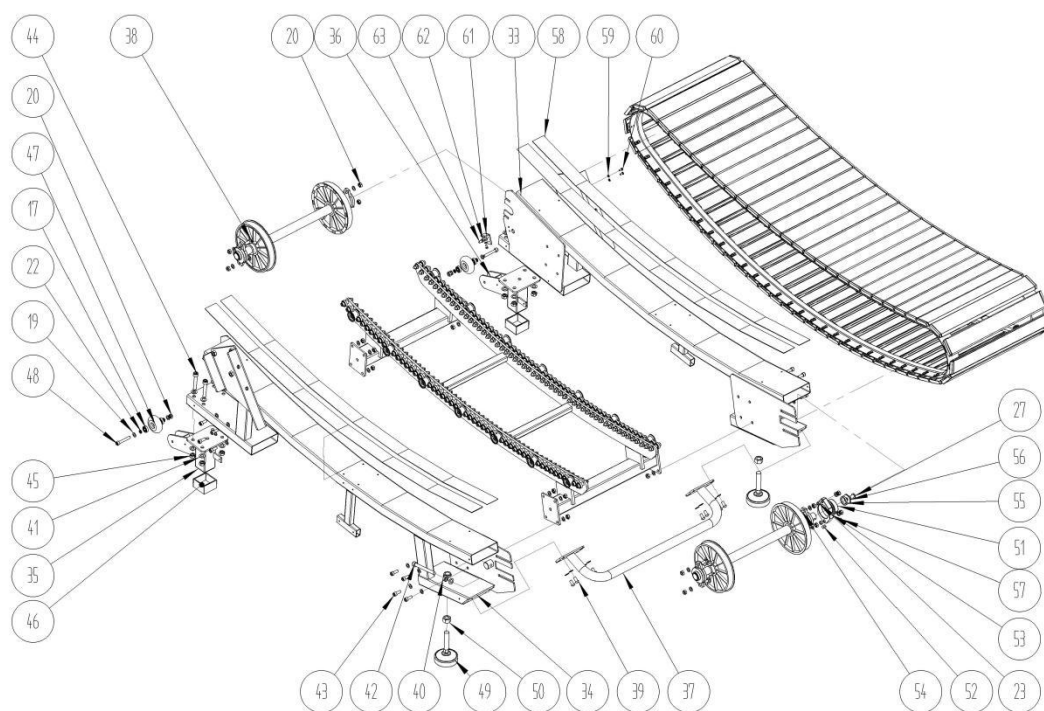
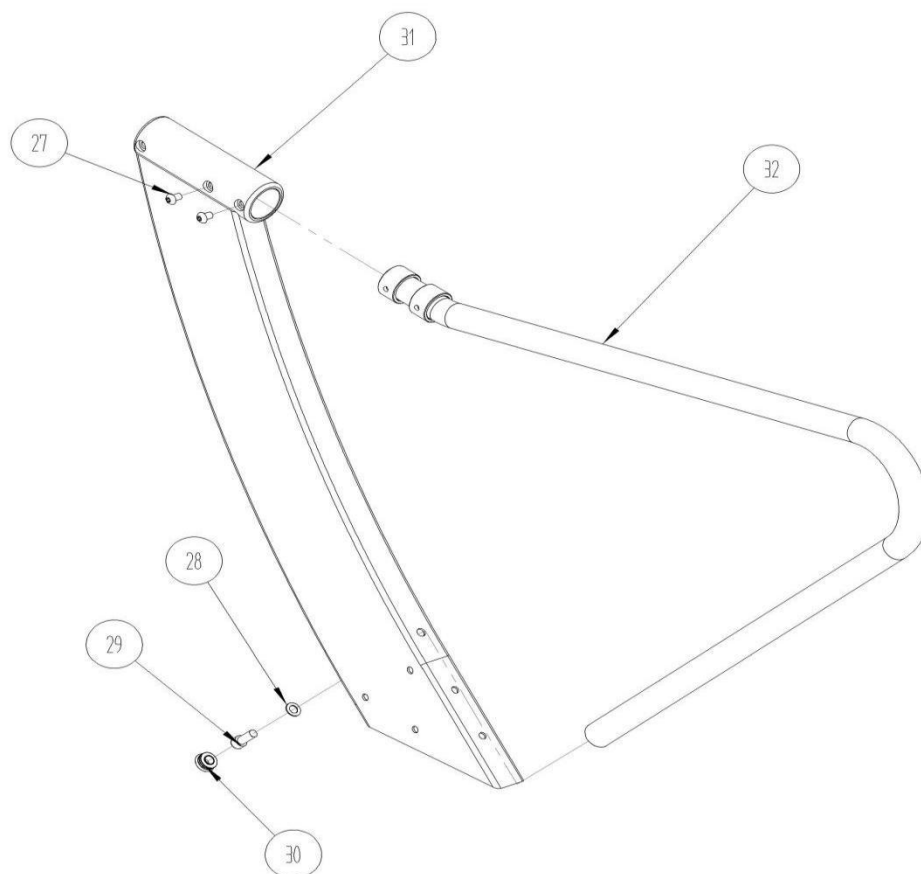
6mm Hexagon spanner 1pcs

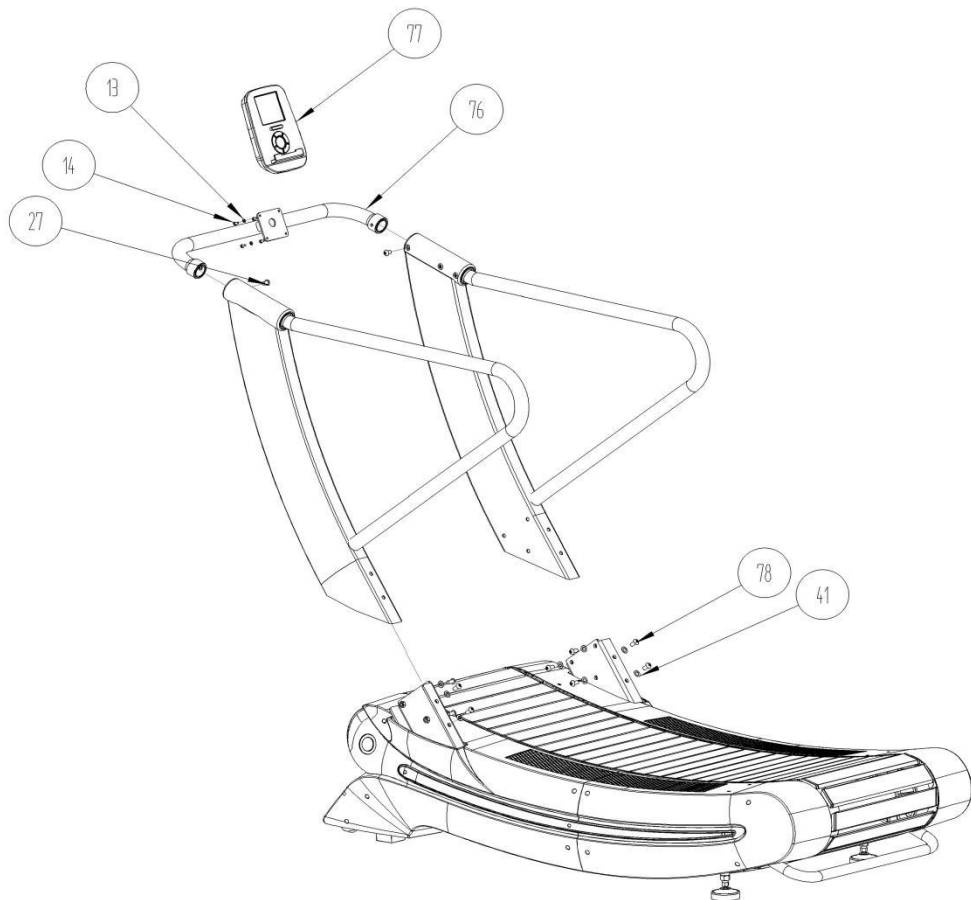
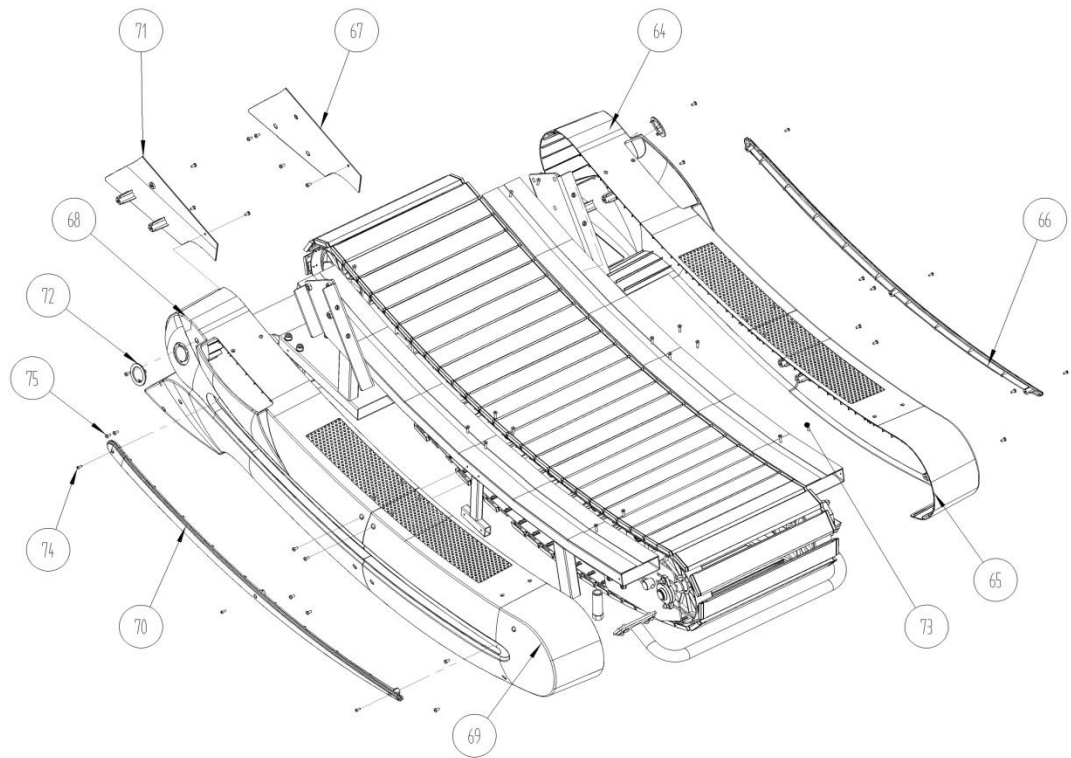
7. Explosive view











Item	Description	QTY
1	TZ03-SP03-0302 Front axle	1
2	FL005 Bearing pedestal	4
3	TZ06-SP03-0612 Front wheel	2
4	8X25 Flat key	4
5	M6X8L-J1 Set screw	12
6	Magnet	2
7	TZ03-SP03-0303 Back axle	1
8	TZ06-SP03-0613 Back wheel	2
9	Running belt unit	60
10	TZ17-SP03-1701 Running belt	2
11	TZ10-SP03-1001 Foam glues tape	120
12	TZ02-SP03-0235 Running belt fixing metal plate	120
13	Φ 10X φ 5.5X1.0t-C1 washer	244
14	M5X12L-A1 Cross plate circular bolt	244
15	TZ04-SP03-0403 Running belt rack	1
16	TZ03-SP03-0308 Small bearing washer sleeve	92
17	608 Bearing	124
18	M8X40L-N1 Hexagon socket cap screws	92
19	Φ 16X φ 9X1.0t-C1 washer	160
20	M8X7t-S1 Lock nut	134
21	TZ03-SP03-0311 Belt aluminium wheel	14
22	TZ03-SP03-0309 inner bearing spacing	18
23	TZ03-SP03-0307 Big bearing washer sleeve	16
24	M8X45L-N1 Hexagon socket cap screws	14
25	TZ04-SP03-0414 Left side stand column welding part	1
26	TZ04-SP03-0414 Left side handle welding part	1
27	M10X15L-N2 Hexagon round screw	7
28	Φ 22X φ 13X1.5t-C1 Washer	2
29	M12X30L-N1 Hexagon socket cap screws	2
30	601 Plastic part	2
31	TZ04-SP03-0410 Right side stand column welding part	1
32	TZ04-SP03-0411 Right side handle welding par	1
33	TZ04-SP03-0401 Right side wall	1
34	TZ04-SP03-0402 Left side wall	1
35	TZ04-SP03-0415 Left side support group	1
36	TZ04-SP03-0407 Right side support group	1
37	TZ04-SP03-0408 Carry handle	1
38	M8X25 Carriage bolts	6
39	M8X16L-N2 Hexagon round screw	8
40	M10X8t-S2 Nut	2
41	Φ 20X φ 11X1.0t-C1 Washer	28

42	M10X100L-N1 Hexagon socket cap screws	2
43	M8X20L-N1 Hexagon socket cap screws	16
44	M10X60L-N1 Hexagon socket cap screws	8
45	M10X9t-S1 Lock nut	8
46	TZ06-SP03-0614 Footing	2
47	Front wheel	2
48	M8X50L-N1 Hexagon socket cap screws	2
49	M16 Footing	2
50	M16X14.8 Nut	2
51	6205 One-way bearing	1
52	8X14 Flat key	1
53	TZ02-SP03-0236 One-way bearing pedestal	1
54	M8X55 Carriage bolts	2
55	TZ-50-0609 Weight interval washer	1
56	TZ-5013-0211 Small round block	1
57	M6X14L-N2 Hexagon round screw	1
58	TZ10-SP03-1002 Foam glues tape	4
59	Φ9X Φ4.3X0.8t-C1 Washer	3
60	M4X10L-A1 Cross plate circular bolt	3
61	TZ02-SP03-0239 Counter stator	1
62	Probe stator	1
63	Probe	1
64	TZ06-SP03-0603 Right side front shell	1
65	TZ06-SP03-0604 Right side back shell	1
66	TZ06-SP03-0605 Right side trim strip	1
67	TZ06-SP03-0606 Right side protecting case	1
68	TZ06-SP03-0607 Left side front shell	1
69	TZ06-SP03-0608 Left side back shell	1
70	TZ06-SP03-0609 Left side trim strip	1
71	TZ06-SP03-0610 Left side protecting case	1
72	TZ06-SP03-0611 Decorative ring	2
73	M5X20L-N3 Hexagon countersunk head screw	16
74	M4X12L-M1 Cruciform slotted screw	6
75	M5X10L-A1 Cross plate circular bolt	26
76	TZ04-SP03-0412 Console welding assemble	1
77	TZ06-SP03-0616 Console	1
78	M10X20L-N2 Hexagon socket screw	10